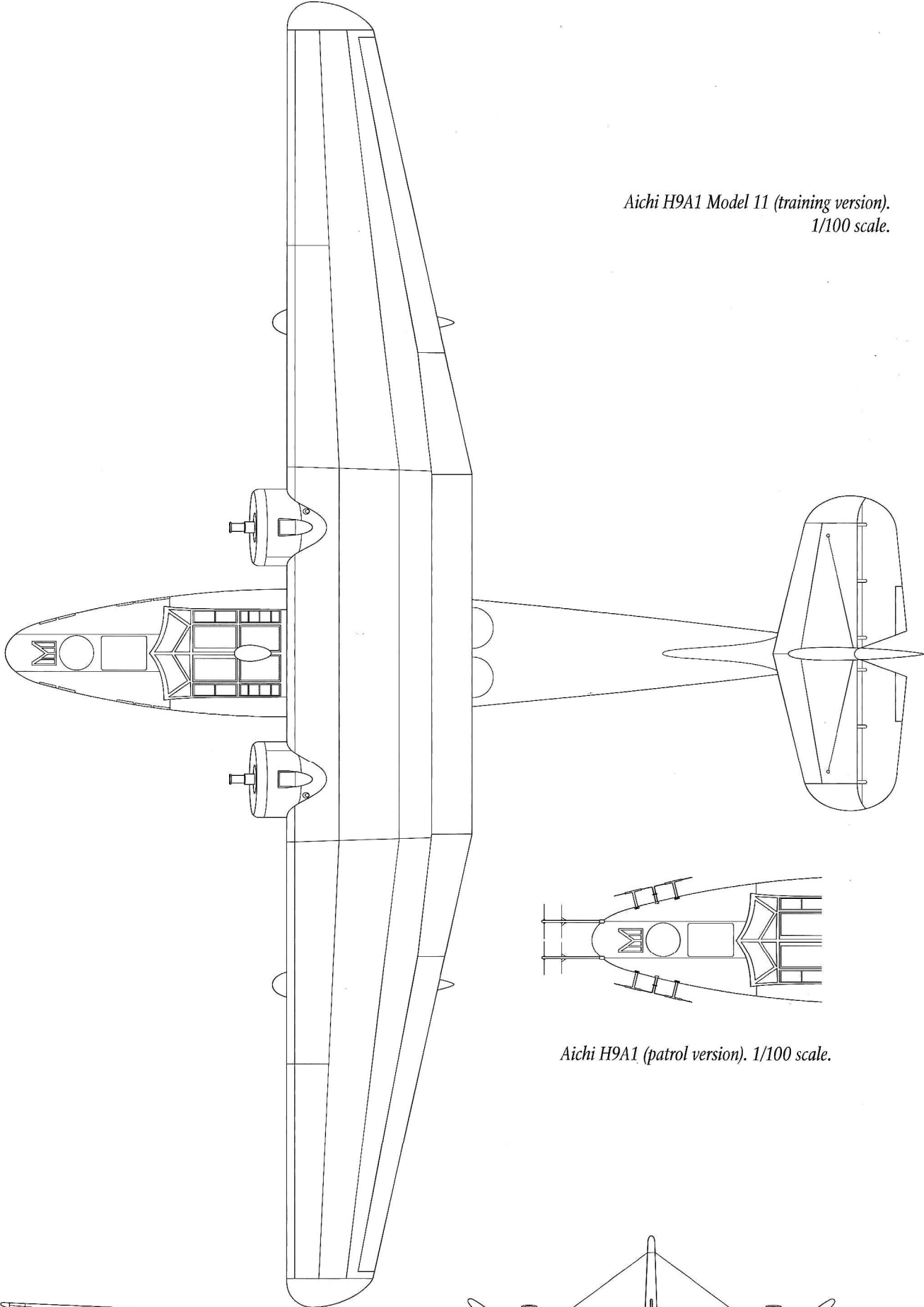
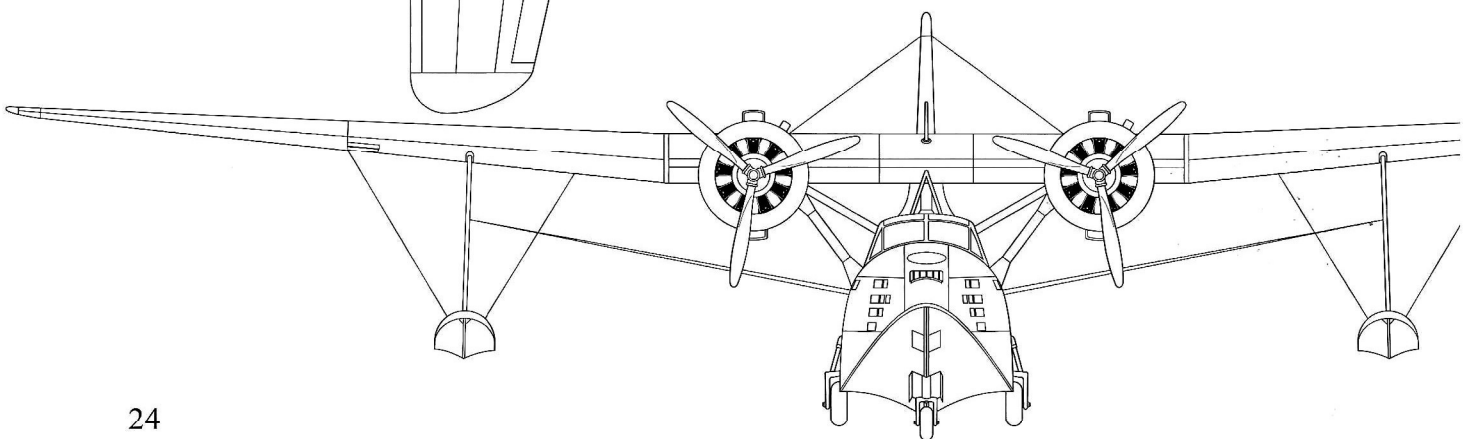


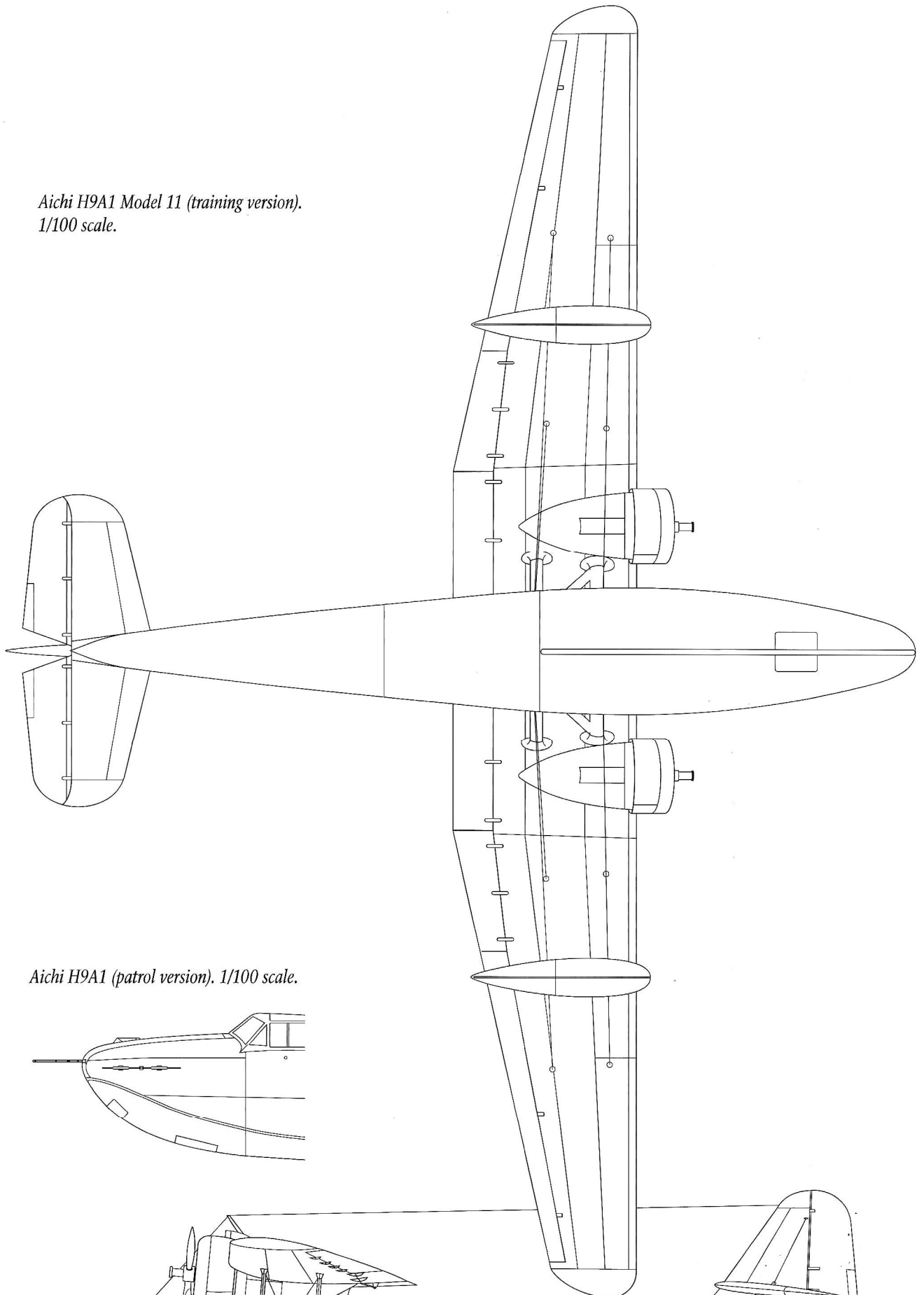
*Aichi H9A1 Model 11 (training version).  
1/100 scale.*



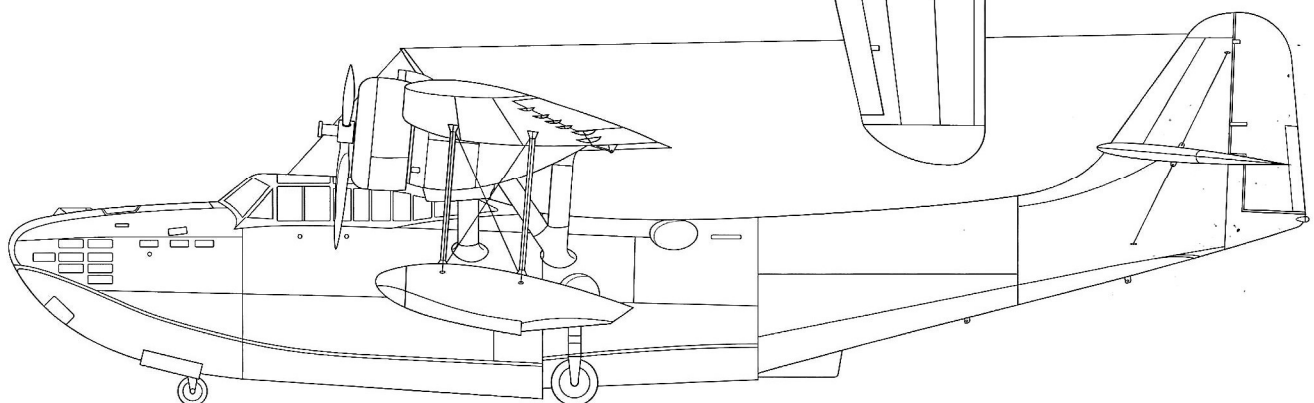
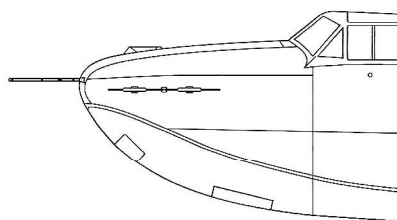
*Aichi H9A1 (patrol version). 1/100 scale.*



*Aichi H9A1 Model 11 (training version).  
1/100 scale.*



*Aichi H9A1 (patrol version), 1/100 scale.*





*Aichi H9A1 Model 11 flying boat captured by the American occupational forces. The same H9A1 in page 28 and the next page. The code “E-21” on the fin seems to mean “No.21 H9A1 in Yokosuka Kokutai.*

- **Power plant:**
  - Two 9-cylinder air-cooled radial Nakajima Kotobuki 41 *Kai* 2 engines, producing 710 hp (522 kW) and 780 hp (574 kW) at 3,000 m; wooden fixed pitch two-blade propellers with 3.1 m diameter. Fuel capacity 2,836 l and 256 l of oil (H9A1 prototype).
  - Two 9-cylinder, air-cooled radial Nakajima Kotobuki 42 or 43 engines producing 710 hp (522 kW) and 610 hp (448 kW) at 3,000 m; metal variable pitch three-blade propellers with 2.95 m diameter. Fuel capacity 2,680 l and 280 l of oil (H9A1 Model 11).
- **Armament:** two or three flexible 7.7 mm Type 92 bow and dorsal mounted machine guns.
- **Bomb load:** up to 500 kg – usually two 250 kg training bombs or depth charges.

Type	13-Shi H9A1 first prototype	H9A1 Model 11
<b>Dimensions</b>		
Wing span [m]	21	24
Length [m]	16.95	16.95
Height [m]	5.54	5.25
Wing area [m <sup>2</sup> ]	58.62	63.30
<b>Weights</b>		
Empty [kg]	5,140	4,900
Takeoff [kg]	7,000	7,000
Takeoff maximum [kg]	7,560	7,500
Payload [kg]	1,860	2,100
Wing loading [kg/m <sup>2</sup> ]	119.41	110.58
Power loading [kg/hp]	4.93	4.93
<b>Performance</b>		
Maximum speed at 3,000 m [km/h]	324	317
Cruising speed at 3,000 m [km/h]	222-278	222
Landing speed [km/h]	109	110
Climb to 3,000 m in	10'24"	11'14"
Ceiling [m]	6,650	6,780
Service ceiling [m]	3,000	
Range [km]	2,150	1,210
Maximum range [km]	3,330	2,780
Flight time [h]	8	9

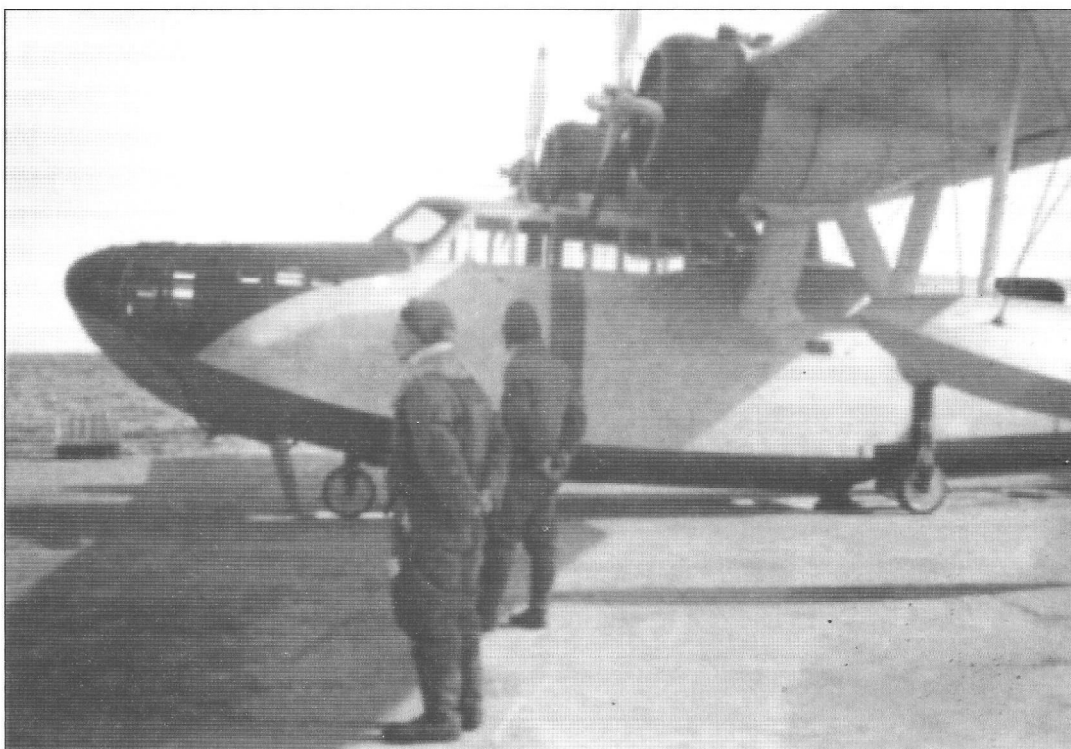
#### Production

Aichi Kokuki Kabushiki Gaisha in Eitoku:	
H9A1 prototypes (1940)	3
H9A1 Model 11 (1942–1943)	24
Nihon Hikoki Kabushiki Gaisha (Nippi) in Tomioka near Yokohama:	
H9A1 Model 11 (1944)	4
<b>Total</b>	<b>31</b>

*Aichi H9A1 Model 11 flying boat of the Takuma Kokutai during flight tests at the Ohtsu air base. The aircraft was powered by two 9-cylinder Nakajima Kotobuki 42 radial engines producing 710 hp takeoff power each. Defensive armament comprised three flexible 7.7 mm machine guns mounted in bow and dorsal positions.*



*Side view of the front section of the Aichi H9A1 Model 11 flying boat fuselage. Ohtsu air base. Despite having undercarriage (seen in the photograph) retracted into the fuselage the H9A1 flying boat was not a typical amphibious aircraft and it was not able to take off from nor touch down on land.*

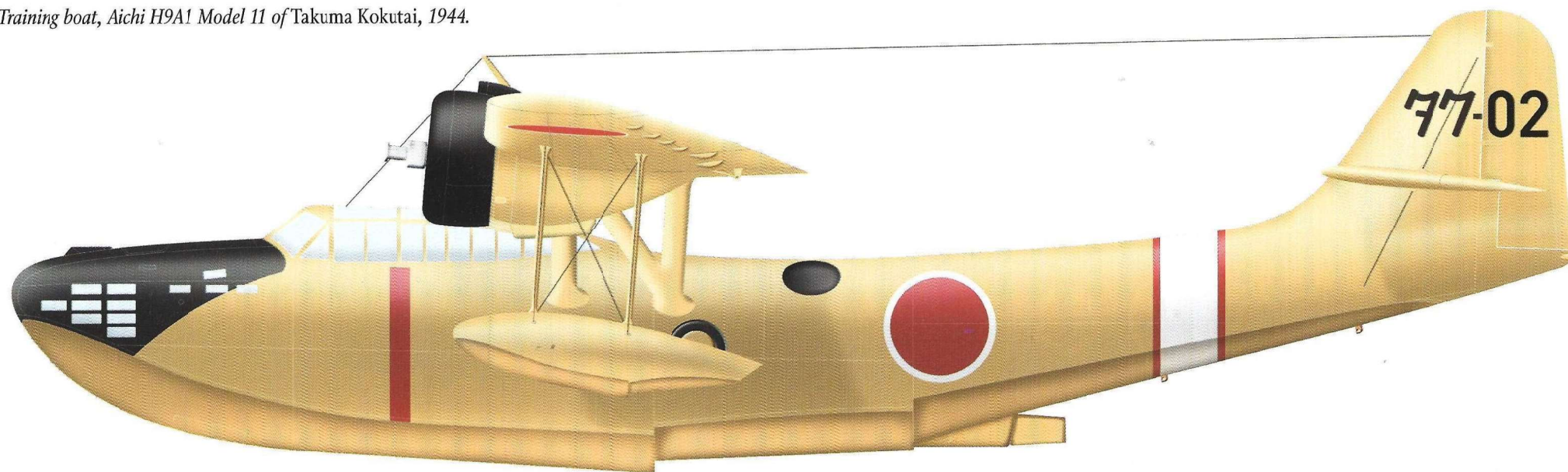


*Aichi H9A1 Model 11 flying boat of the Takuma Kokutai during flight tests at the Ohtsu air base.*





*Training boat, Aichi H9A1 Model 11 of Takuma Kokutai, 1944.*



*Patrol flying boat, Aichi H9A1 Model 11, (T-53).*

