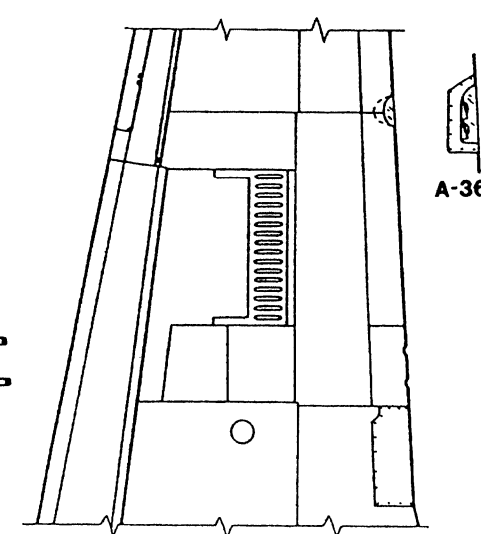
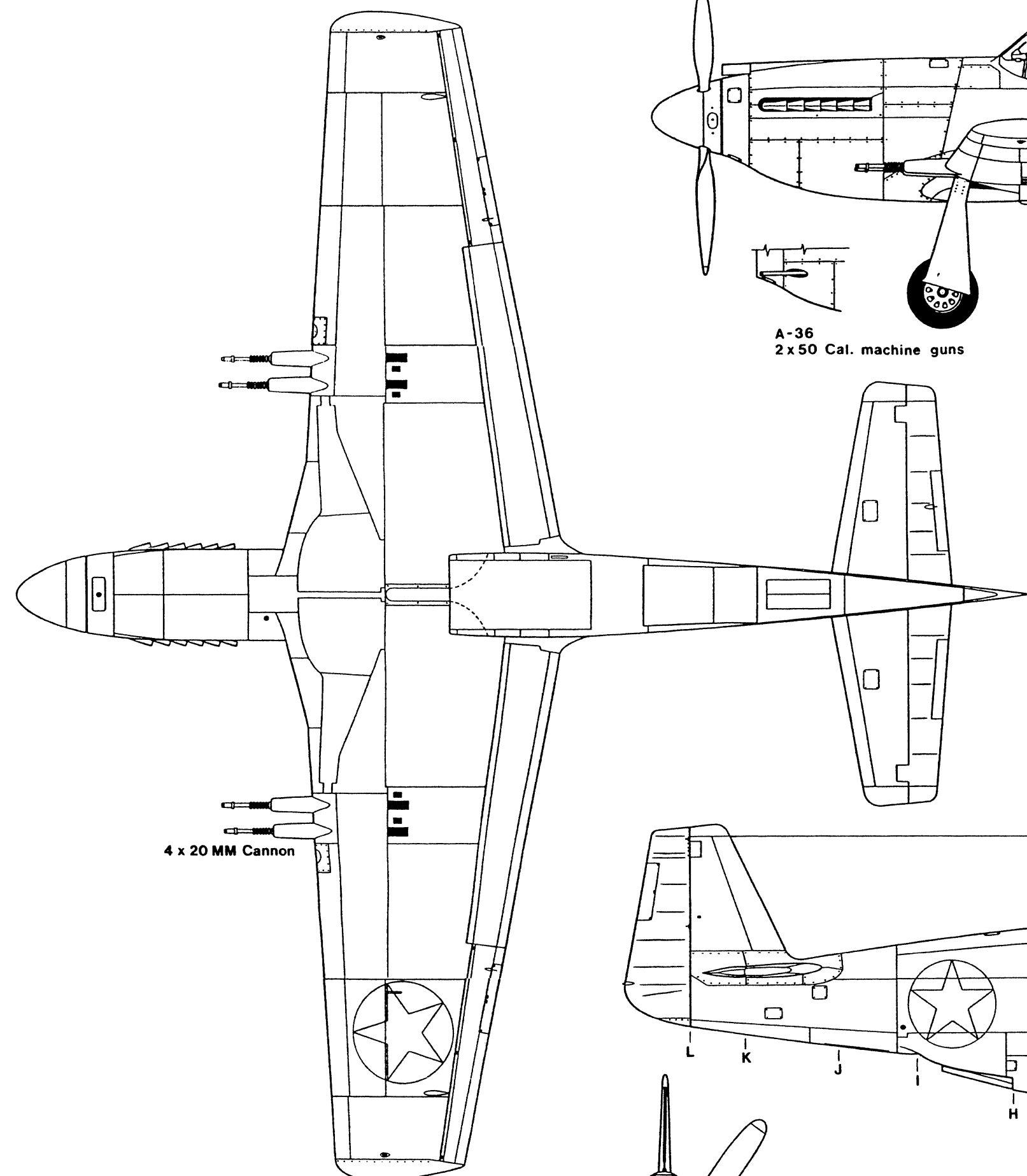


P-51A, A-36 Scoop

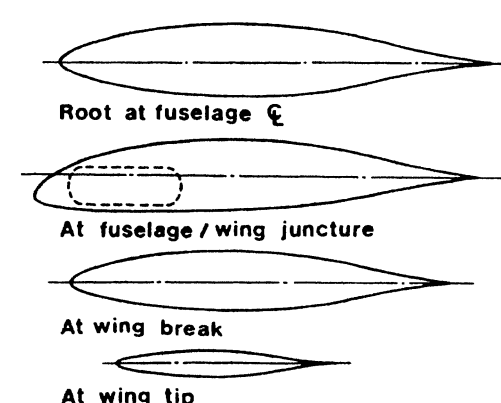
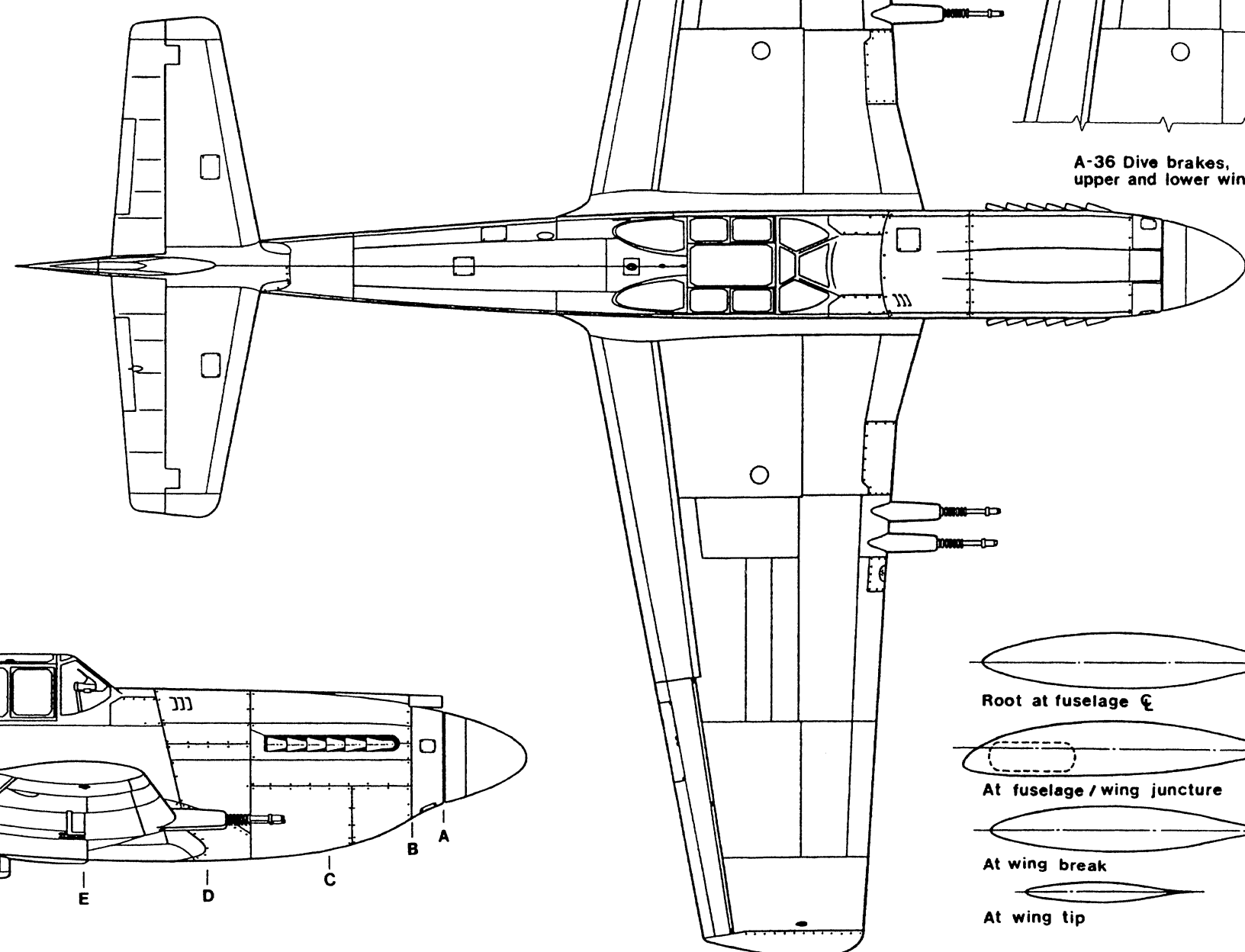
A-36
2 x 50 Cal. machine guns



A-36 Dive brakes,
upper and lower wing



4 x 20 MM Cannon

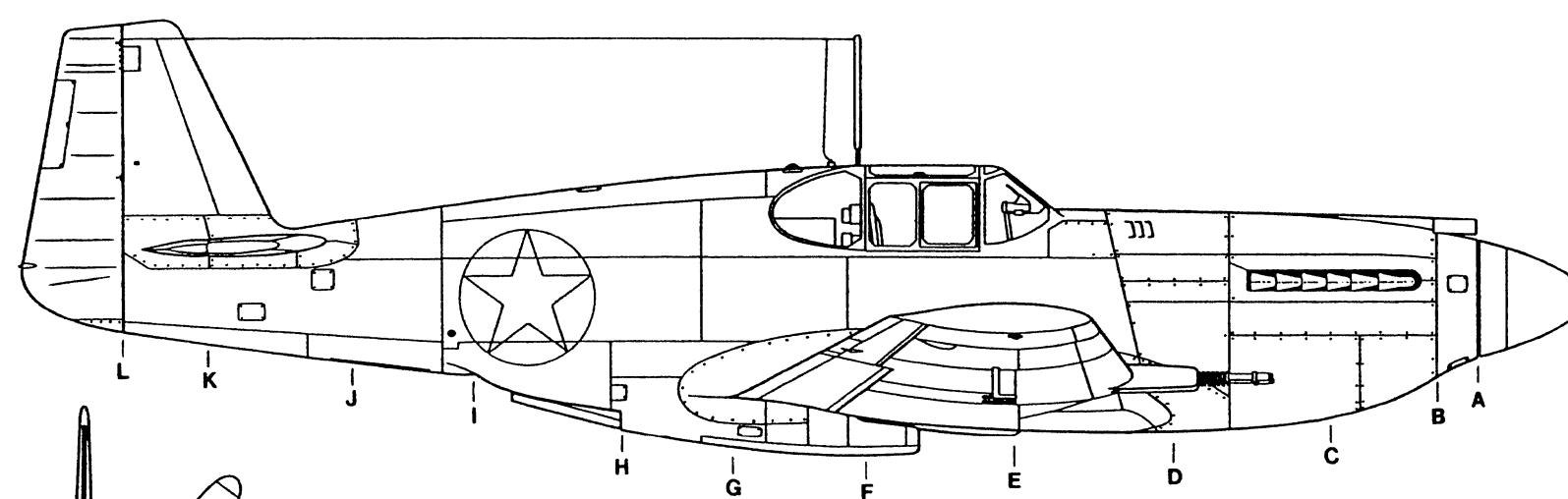


Root at fuselage \bar{C}

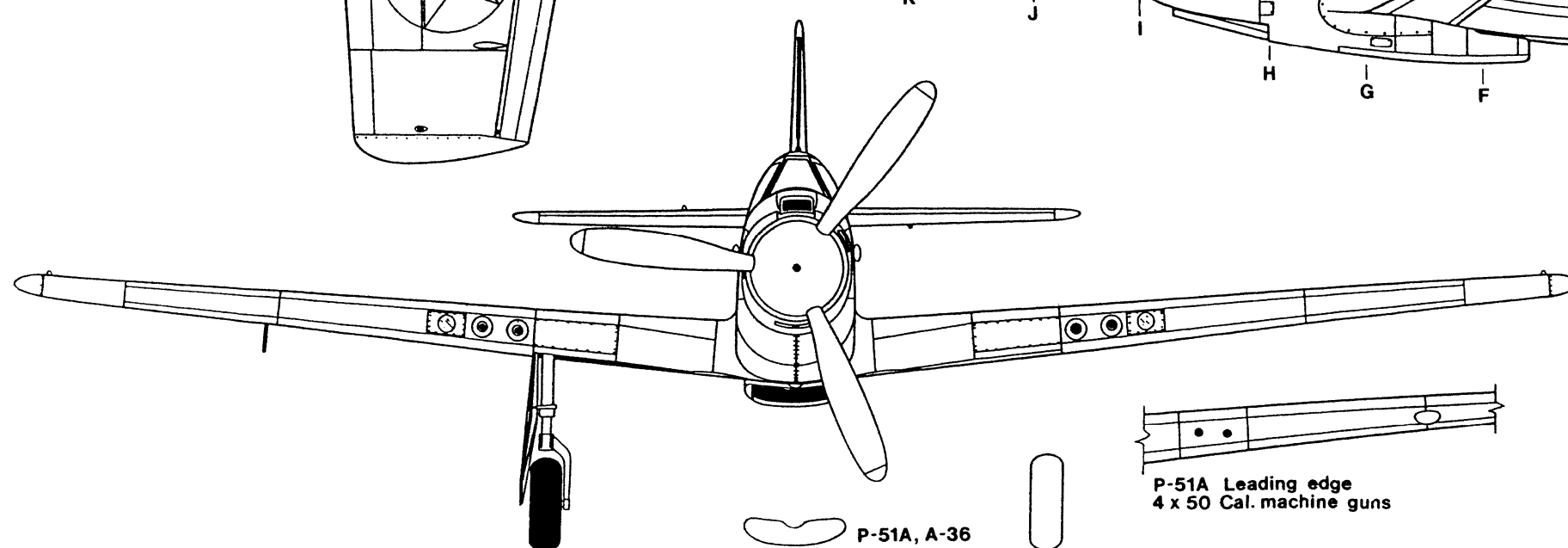
At fuselage / wing juncture

At wing break

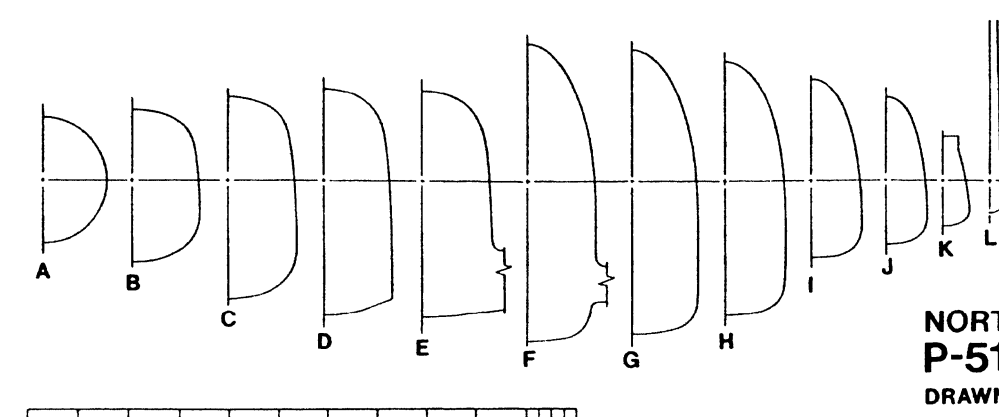
At wing tip



P-51A Leading edge
4 x 50 Cal. machine guns



P-51A, A-36



NORTH AMERICAN AVIATION INC.
P-51, P-51A, A-36 MUSTANG
DRAWN BY JOHN W. BELL 1991

© ALL RIGHTS RESERVED